

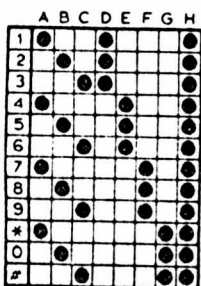
**SCHEMATIC OF THE  
HEATHKIT®  
MICODER™II  
MODEL HD-1984**

Copyright © 1977  
Heath Company  
All Rights Reserved  
Printed in the United States of America

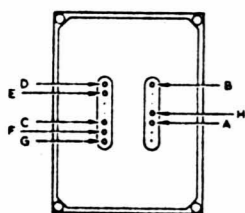
Part of 595-1963-01

**NOTES:**

- REFER TO THE "CIRCUIT BOARD X-RAY VIEW" FOR THE PHYSICAL LOCATION OF PARTS.
- RESISTORS ARE 1/4 WATT, 10% TOLERANCE UNLESS OTHERWISE INDICATED. RESISTOR VALUES ARE IN OHMS (K=1000, M= 1,000,000).
- DC VOLTAGE MEASUREMENTS WERE TAKEN WITH A HIGH INPUT IMPEDANCE VOLTMETER FROM THE POINTS INDICATED TO CIRCUIT BOARD GROUND. VOLTAGES MAY VARY ±10%.
- THIS SYMBOL INDICATES A DC VOLTAGE WITH NO TONE BEING PRODUCED AND PTT SWITCH ACTUATOR DEPRESSED.
- THIS SYMBOL INDICATES A DC VOLTAGE WITH KEY "1" PUSHED AND PTT SWITCH ACTUATOR DEPRESSED.
- THIS SYMBOL INDICATES CIRCUIT BOARD GROUND.
- THIS SYMBOL INDICATES COMMON GROUND.
- THIS SYMBOL INDICATES A CONNECTION TO THE CIRCUIT BOARD.



● INDICATES TERMINAL SHORTED TO COMMON WHEN KEY IS DEPRESSED  
○ INDICATES TERMINAL SHORTED TO COMMON WHEN KEY IS NOT DEPRESSED  
TERMINAL H IS COMMON



IDENTIFICATION OF KEYBOARD PINS

Low Tone (Hz)	High Tone (Hz)		
	1209	1336	1477
697	1	2	3
770	4	5	6
852	7	8	9
941	*	0	#

Two-tone output frequencies from the Micoder.

