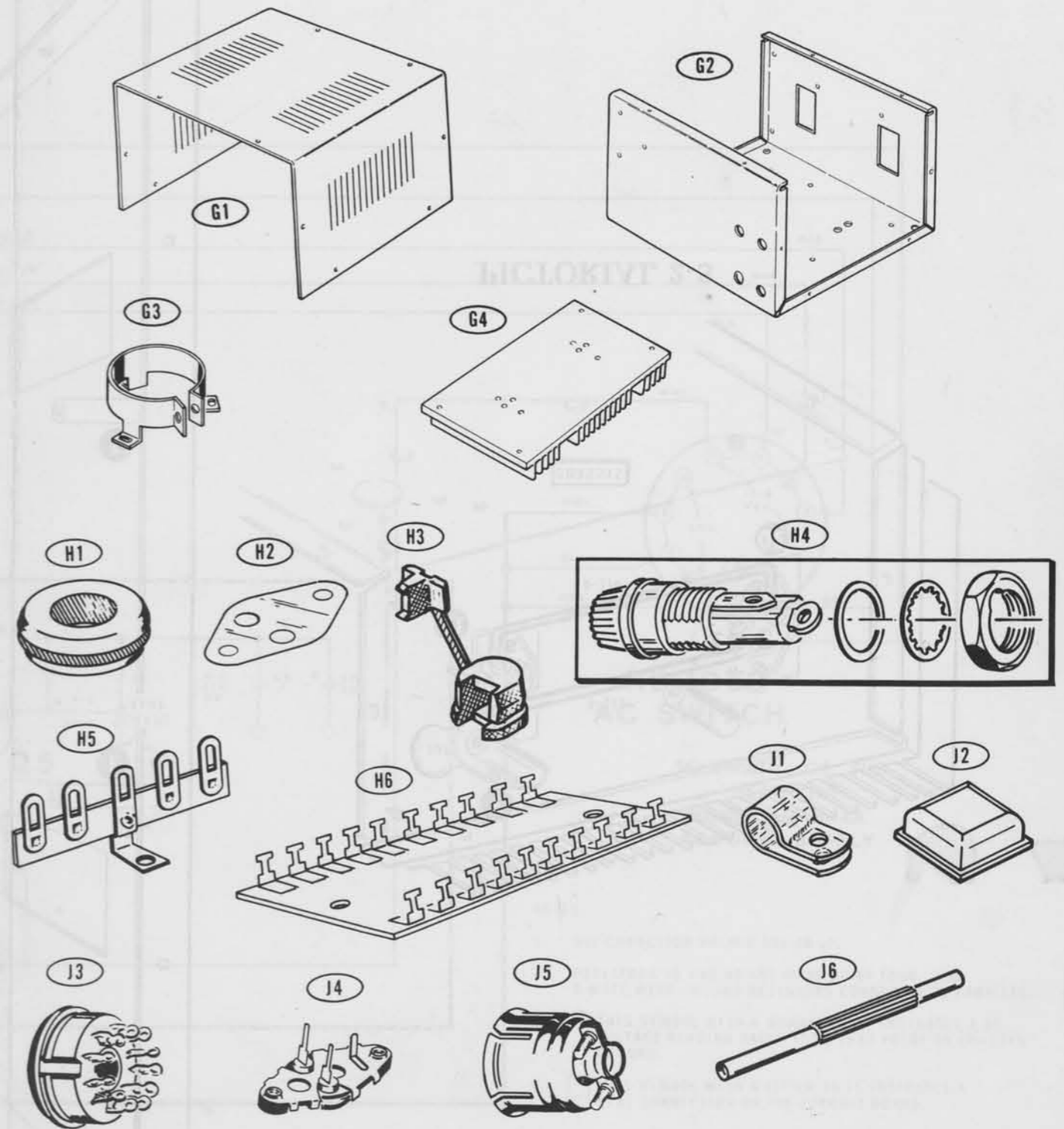
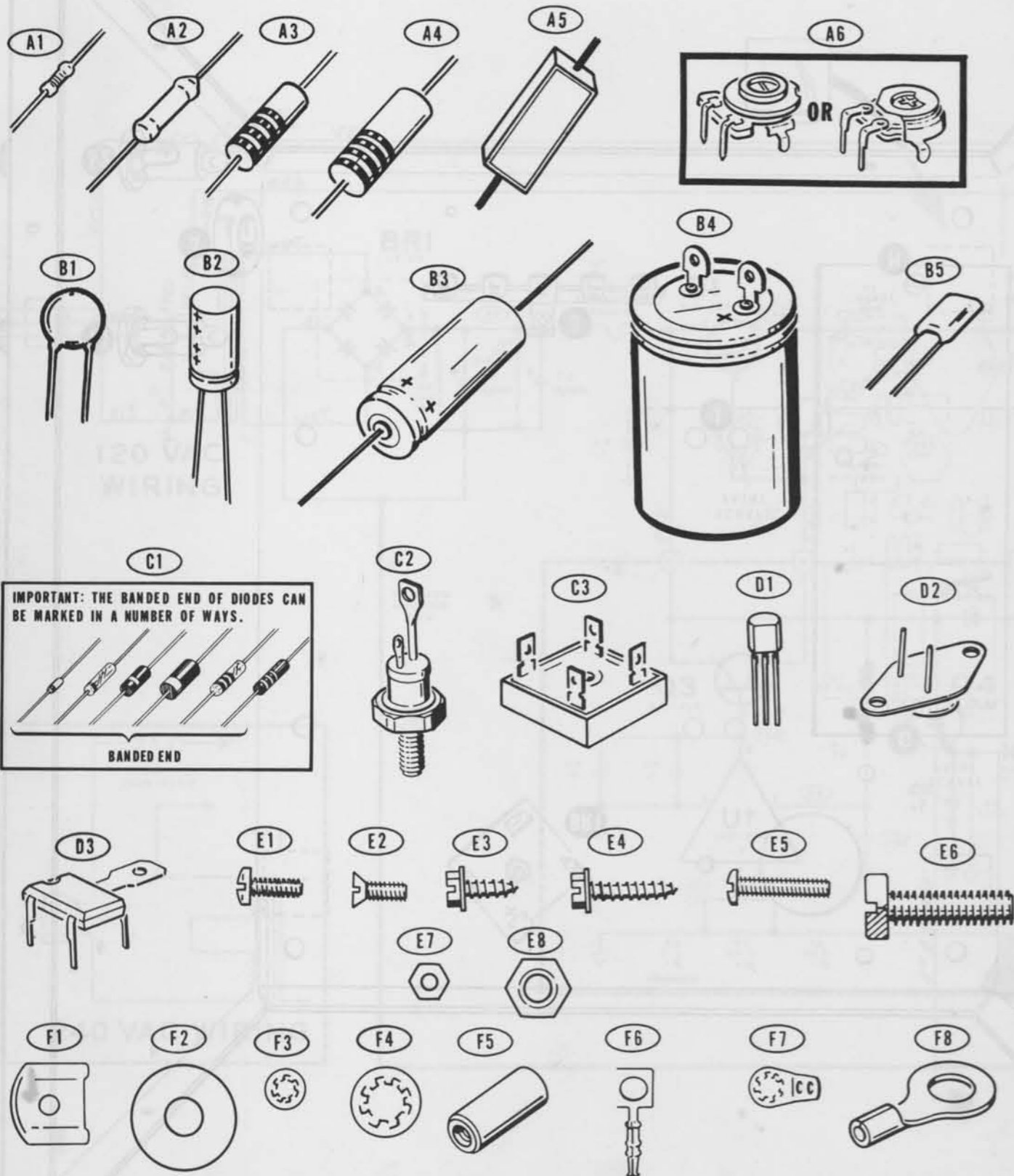


# ILLUSTRATION BOOKLET

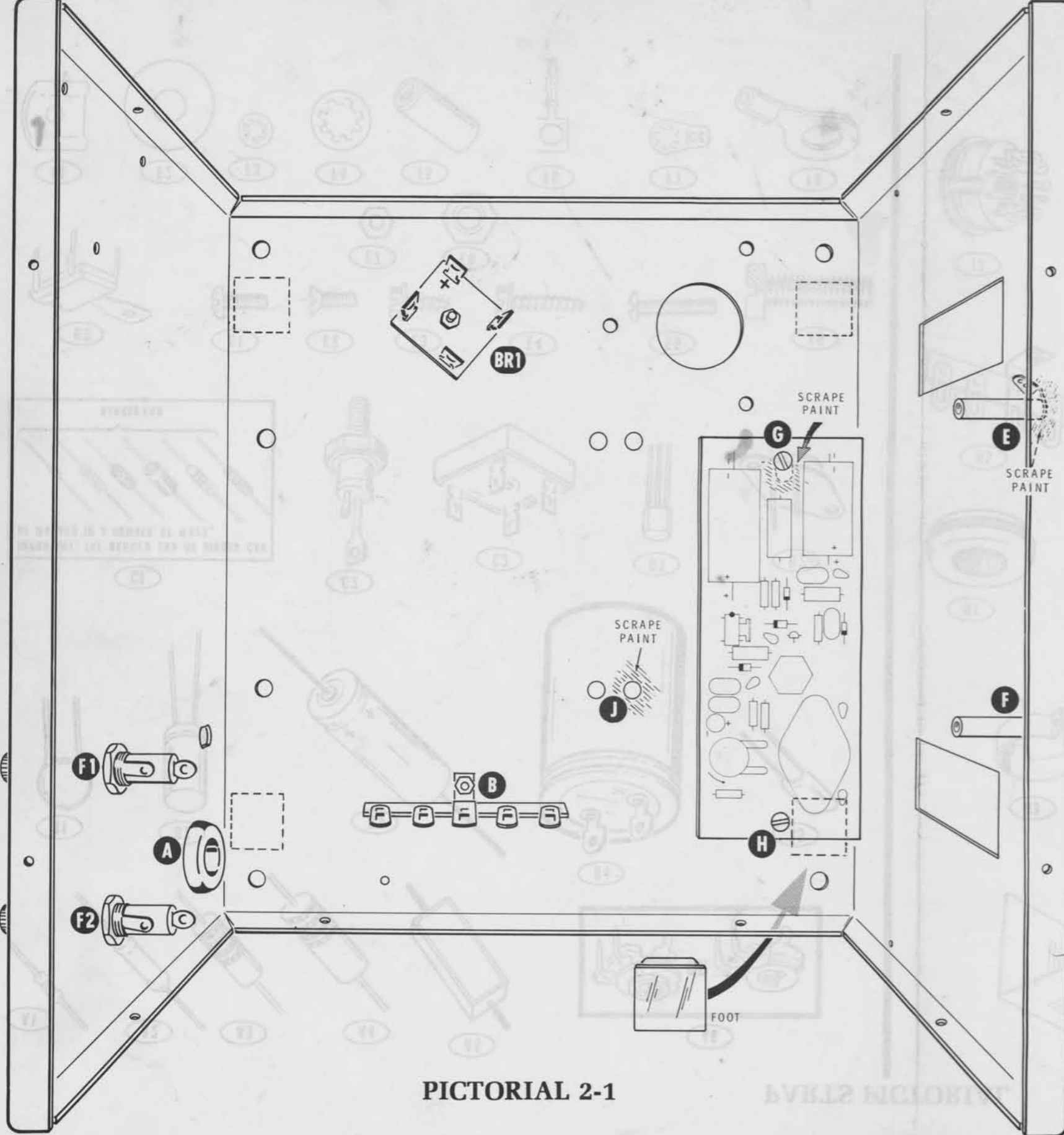
Part of 595-2198-01

## PARTS PICTORIAL

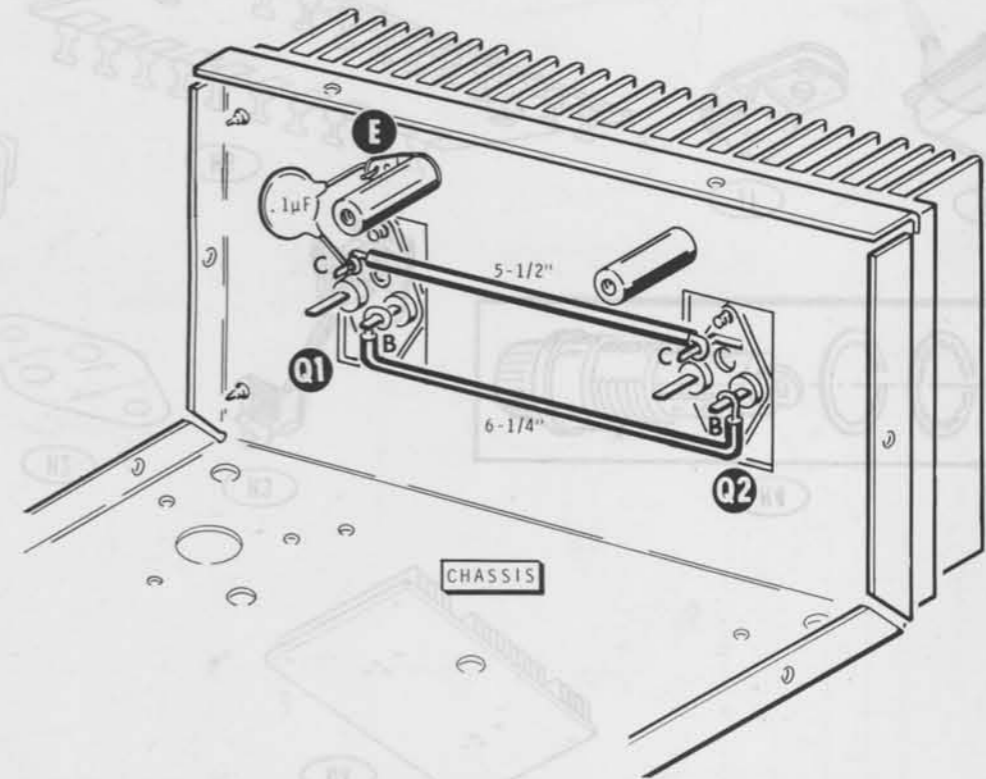


Model HP-1144A

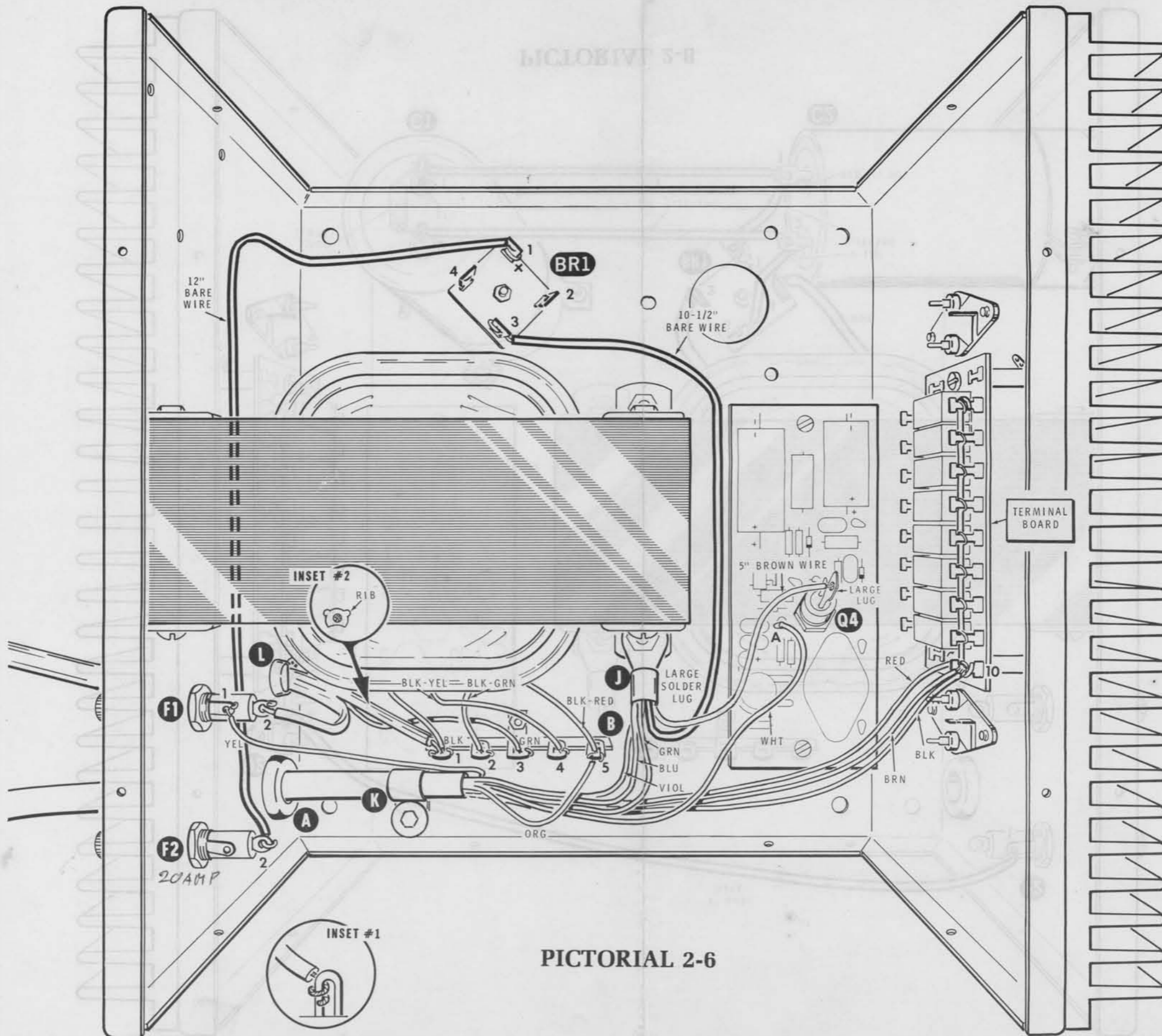
Copyright © 1978  
Heath Company  
All Rights Reserved  
Printed in the United States of America



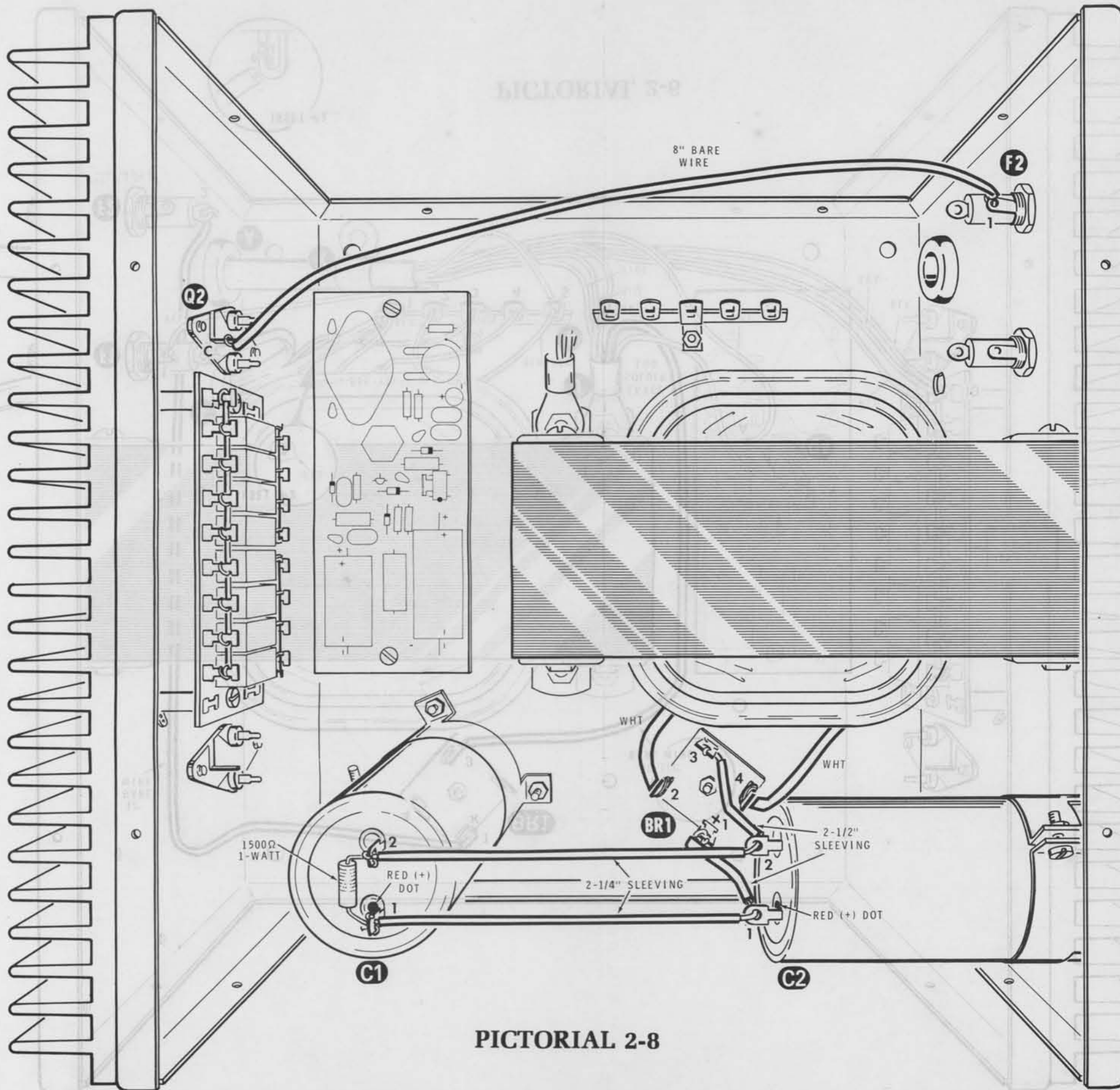
PICTORIAL 2-1



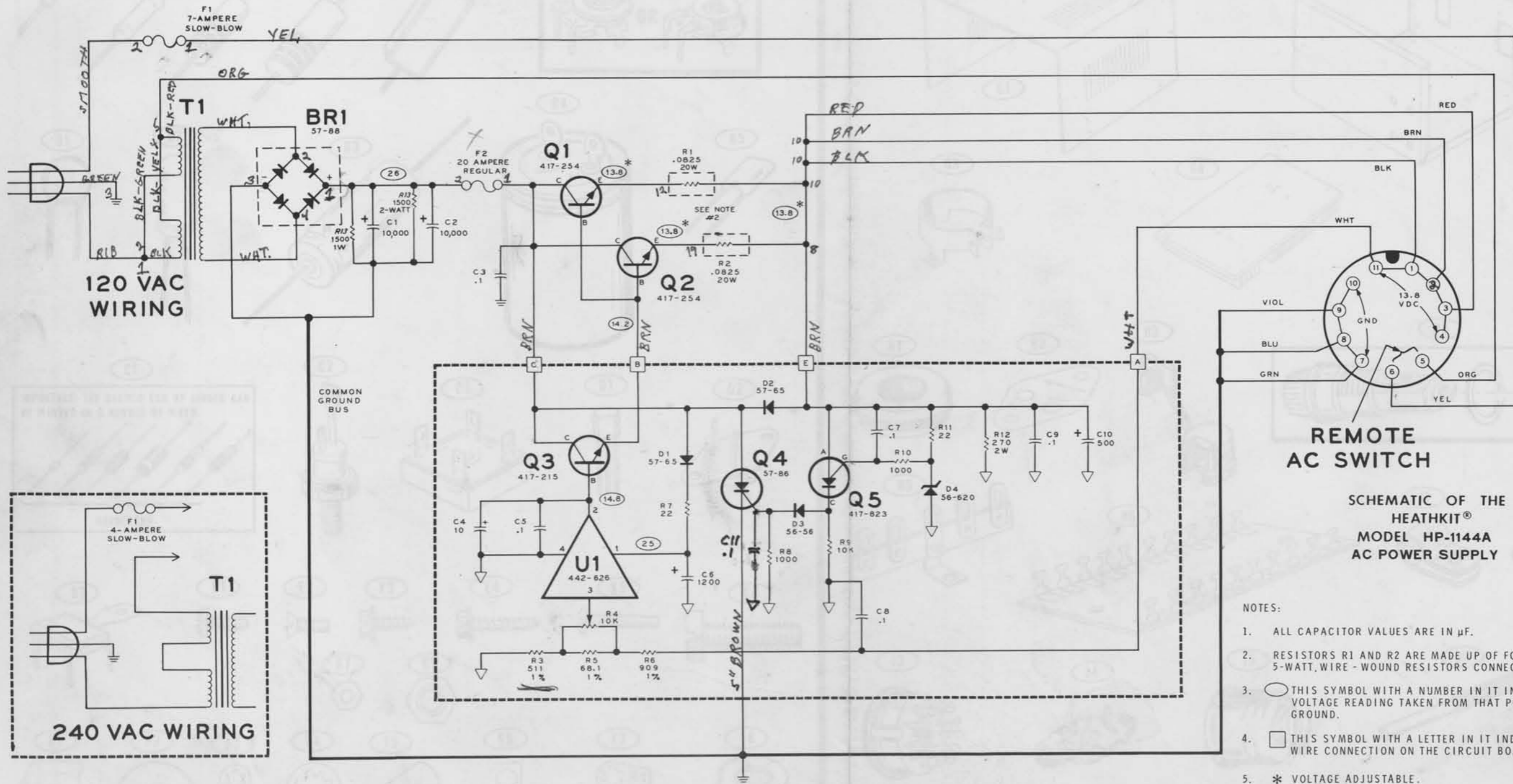
PICTORIAL 2-3



PICTORIAL 2-6





PICTORIAL 2-8



### REMOTE AC SWITCH

### SCHEMATIC OF THE HEATHKIT® MODEL HP-1144A AC POWER SUPPLY

NOTES:

1. ALL CAPACITOR VALUES ARE IN  $\mu\text{F}$ .
2. RESISTORS R1 AND R2 ARE MADE UP OF FOUR .33 $\Omega$ , 5-WATT, WIRE-WOUND RESISTORS CONNECTED IN PARALLEL.
3.  THIS SYMBOL WITH A NUMBER IN IT INDICATES A DC VOLTAGE READING TAKEN FROM THAT POINT TO CHASSIS GROUND.
4.  THIS SYMBOL WITH A LETTER IN IT INDICATES A WIRE CONNECTION ON THE CIRCUIT BOARD.
5. \* VOLTAGE ADJUSTABLE.