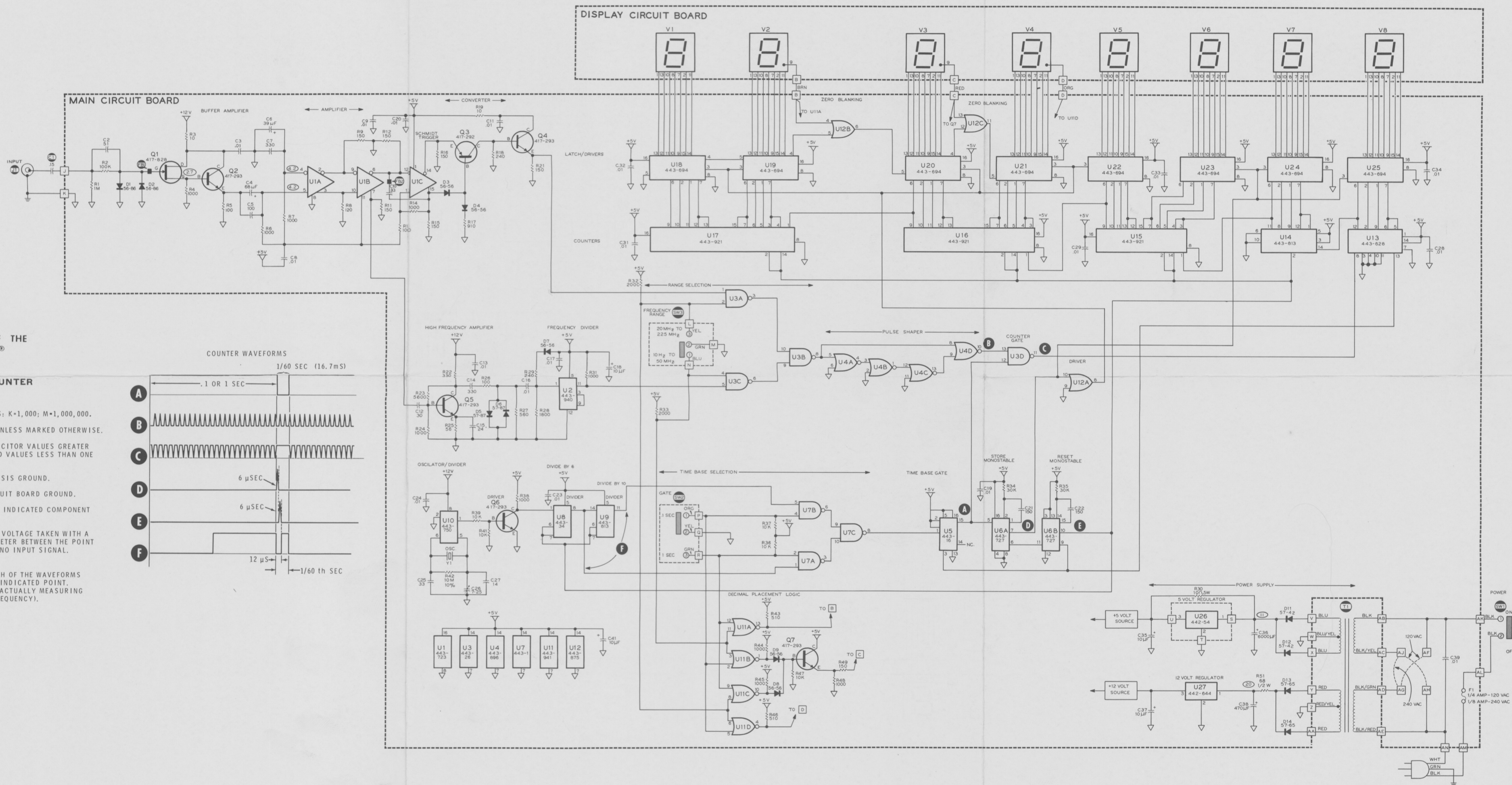
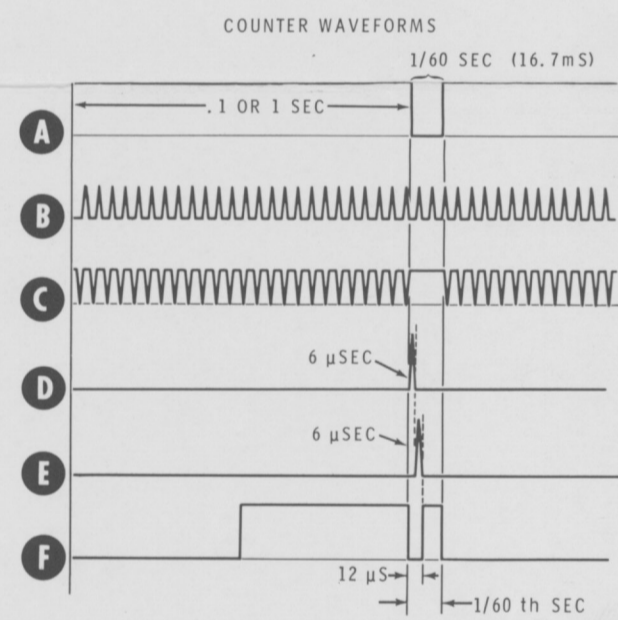


**SCHEMATIC OF THE
HEATHKIT®
MODEL
IM-2410
FREQUENCY COUNTER**

NOTES:

1. ALL RESISTOR VALUES ARE IN OHMS; K=1,000; M=1,000,000.
2. ALL RESISTORS ARE 1/4 WATT 5%, UNLESS MARKED OTHERWISE.
3. UNLESS MARKED OTHERWISE, CAPACITOR VALUES GREATER THAN ONE ARE IN PICOFARADS, AND VALUES LESS THAN ONE ARE IN MICROFARADS.
4. \equiv THIS SYMBOL INDICATES CHASSIS GROUND.
5. ∇ THIS SYMBOL INDICATES CIRCUIT BOARD GROUND.
6. \ominus THIS SYMBOL SHOWS THAT THE INDICATED COMPONENT IS MOUNTED ON THE CHASSIS.
7. \bigcirc THIS SYMBOL INDICATES A DC VOLTAGE TAKEN WITH A HIGH INPUT IMPEDANCE VOLTMETER BETWEEN THE POINT INDICATED AND GROUND WITH NO INPUT SIGNAL. VOLTAGES MAY VARY $\pm 25\%$.
8. \bullet THIS SYMBOL INDICATES WHICH OF THE WAVEFORMS SHOWN WILL BE FOUND AT THE INDICATED POINT. WAVEFORMS ARE TAKEN WHILE ACTUALLY MEASURING AN INPUT (ANY ACCEPTABLE FREQUENCY).



Schematic

Part of 595-2383-10

Copyright © 1980
Heath Company
All Rights Reserved
Printed in the United States of America